

Pickface Replenishment plugin

Item Name	Item Description	UOM	Pickface Bay	Max Pickface Qty	Qty On Hand	Qty to Replen	Combined BULK Qty	Qty On SO	Qty On PO
100 Frame	101 Frame	EACH	Location1		2.00		0.00	12.00	1.00
1008566	NW Watermelon	EACH	Location1		109,000.00		0.00	52,050.00	0.00
12\"/>									

The plugin can be found in Stock – Other - called : **“Pickface Replenishment”**.

You have to specify which is the **PickFace Warehouse** and which is the **Bulk warehouse**. We envisage that you replenish from the Bulk warehouse. This in reality could be from shelves above the Pickface or another warehouse.

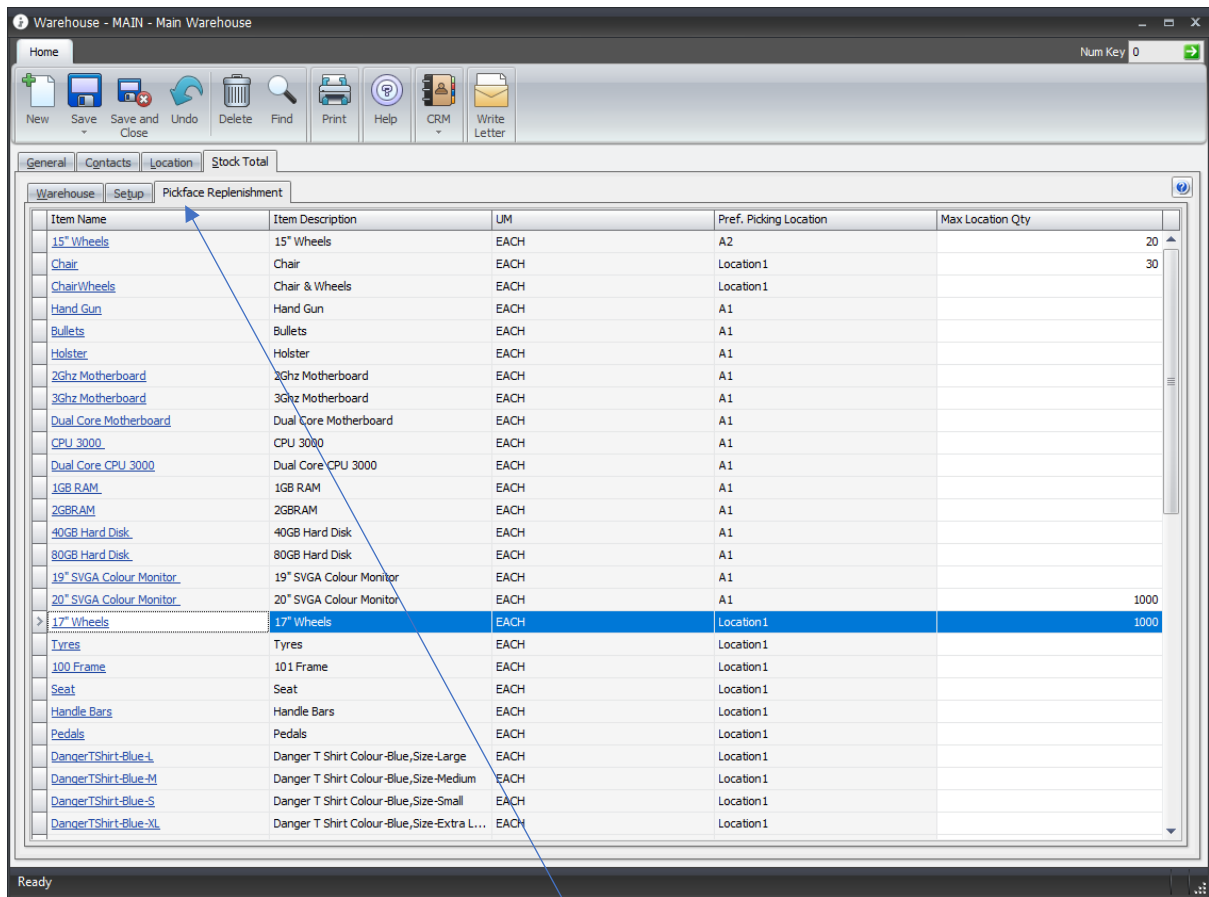
The reason to use another warehouse is so the normal sales orders don't allocate stock from these bins which they would if they were in normal locations in the main warehouse. Interprise also has none normal bins but we think the Bulk warehouse is a good solution.

Note that the + allows you to see all the locations for this item at the BULK warehouse.

The above tells you how much qty you need to move from bulk to the picking location.

There is a Print report option that displays the selected items which could be used by the warehouse to help decide what stock to replenish.

When you move stock down into the picking location you need to do a transfer. Then allocate the stock to orders. The Stock Transfer toolbar button opens a normal stock transfer form with the selected items and the top up qty which could be edited. This just helps enter the items to confirm what was transferred.



In the Warehouse form the plugin adds a tab called "Pickface Replenishment". This is where you would set the max qty the preferred pick location can take of an item.