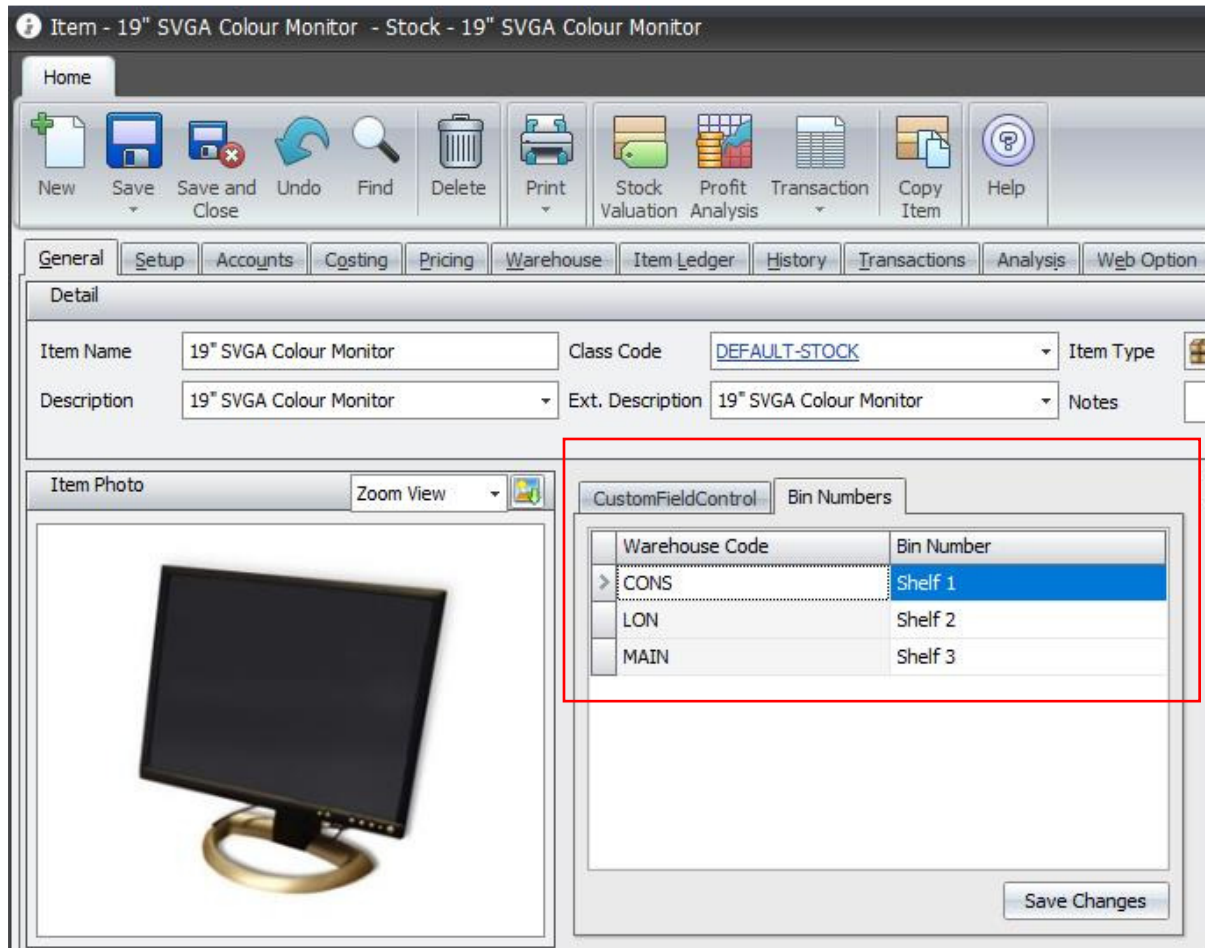




## Item Fixed Bin

This is a simple way of working where you can assign multiple bins where you usually keep a specific item in a warehouse.

The image below shows how against an item you can enter multiple or one bin location per warehouse per item. The example below shows "Shelf 1" only but this could be "Shelf 1", "Shelf 5" for the same item in the same warehouse.



We can amend pick note layouts to have this bin displayed against an item line. This is to help a picker know where to find the item.

NB If you need proper route / bin locations then Interprise has this feature. The above is as much as some users need. There is a separate document on Warehouse Bin Locations in the KB.