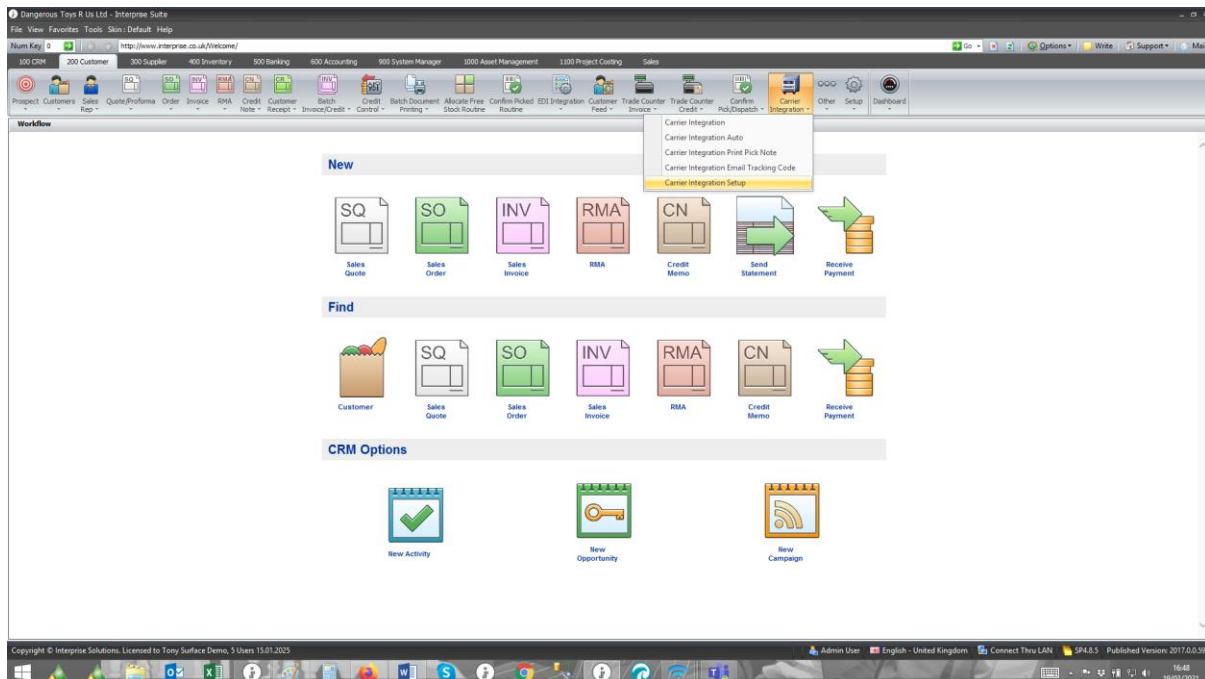


Carrier Integration Setup Overview



Carrier Integration : This opens the form that allows you to see the orders and export them manually. This allows you to process in a batch of orders.

Carrier Integration Packing Station : This allows you to pick orders and then confirm weight, number of boxes, shipping method, qty picked, batch/serial and then easily get the Delivery note, Invoice, Carrier labels, Confirm pick etc. depending on what options are chosen for each Shipping Method. If you use the Packing Station procedure you will probably not use the other menu options here apart from setup.

Carrier Integration Auto : This opens a form that shows the status of automatic exports and executes automatic tasks etc. this needs to be open to run. If you want to print Carrier labels on pick notes then you would probably use this option.

Carrier Integration Print Pick Notes : This allows you to print pick notes with a carrier label as part of the note. The sales order has to have a tracking code to print and you have to follow this procedure.

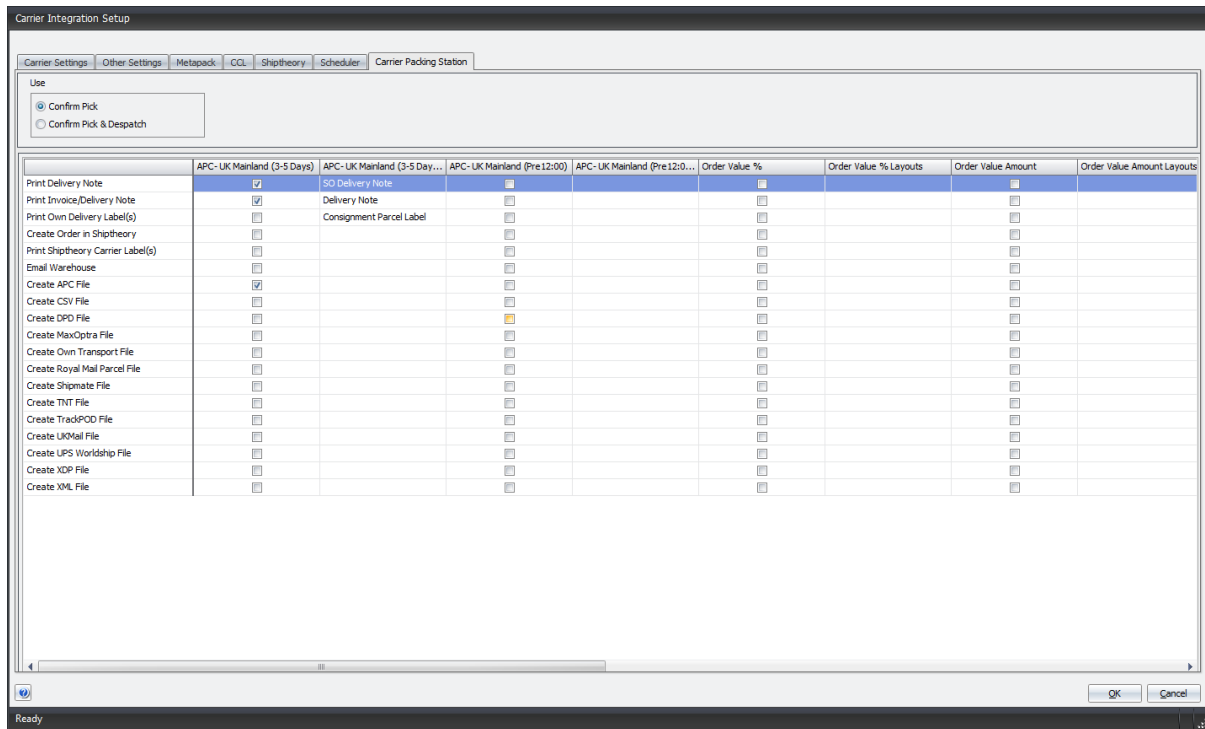
Carrier Integration Email Tracking Code : This allows you to send tracking code emails to customers manually. These can be sent automatically in Auto mode if the option is chosen. Most Carriers send this email out to the customer anyway as part of the label process.

Carrier Integration Setup : This is where you decide what options you are going to use.



Carrier Integration Packing Station Setup

Carrier Packing Station Setup



You need to confirm if you use Confirm Pick or Confirm Pick Dispatch in order processing.

You then need to confirm what you want to be done for each Shipping Method. EG: Print Delivery Note, Label, Get Carrier Label from Ship Theory, create file for TrackPOD etc.

There is a separate tick option for Creating the order in Ship Theory to printing the Carrier labels in case with a specific shipping method you usually need to amend the details or add details like dimensions etc. This would be done by scanning the SO code into Ship Theory software after processing at the packing station.



Assign Printers to User / Workstation

The screenshot shows the 'Carrier Integration Auto' application window. At the top, there is a 'Home' tab and a 'Num Key 0' indicator. Below the tab is a 'Close' button. The main area contains a 'Sales Order' field with the value 'SO-000279', a 'Warehouse Filter' dropdown set to 'MAIN', and a 'Processed Sales Order' field. A table below displays sales order details with columns: Select, Sales Order, Date, Alloc Weight, Tot Weight, No. Boxes, Shipping Method, Customer Code, Customer Name, Total, Currency, Ref 1, and Ref 2. The table has one row with data: SO-000279, 14/02/2022, 3.00, 3.00, 2.00, APC-UK Mainlan..., CUST-000001, A Toy Customer UK Ltd, 286.80, GBP, and empty Ref 1 and Ref 2 fields. Below the table is a 'Detail' section with columns: Item Name, Item Description, Is Drop Ship, Qty Ordered, Quantity Allocated, and Quantity To Confirm. It lists two items: '17" Wheels' and '19" SVGA Colour Monitor'. A dialog box is open in the foreground, titled 'Assign Printers to User / Workstation'. It contains four printer selection fields: 'Own Label Printer', 'Carrier Label Printer', 'Delivery Note Printer', and 'Invoice Printer'. Each field has a dropdown menu with the selected printer name 'NP106AFBF (HP Color Laser Jet MFP M281fdw)'. At the bottom of the dialog are 'OK' and 'Cancel' buttons. A blue arrow points from the 'Carrier Label Printer' dropdown to the 'Carrier Label Printer' field label. Another blue arrow points from the 'Carrier Label Printer' dropdown to the 'Carrier Label Printer' field label in the dialog box.

This allows you to have multiple packing workstations at each warehouse if required. In printer setup it saves the printers to automatically use for the Own Labels, Carrier Labels, Delivery Note and Invoice by User+PC. i.e. you would usually have these printers local to the packing workstation.



Ship Theory Setup

Shiptheory API Information:

User Name:

Password:

Base URL:

Field List:

Shiptheory	Interprise
reference	SalesOrder.SalesOrderCode
reference2	SalesOrder.RootDocumentCode
shipment_detail.weight	SalesOrderDetail.ExtWeight
shipment_detail.parcel1s	SalesOrder.NumParcels_IUK
shipment_detail.value	SalesOrder.Total
recipient.company	SalesOrder.ShipToName
recipient.firstname	CRMContactView.ContactFirstName
recipient.lastname	CRMContactView.ContactLastName
recipient.address_line_1	SalesOrder.ShipToAddress
recipient.address_line_2	SalesOrder.ShipToAddress

Tracking Code Information:

Field List:

Shiptheory	Interprise
shipment_channel_reference_id	SalesOrder.SalesOrderCode
shipment_channel_reference_id_2	SalesOrder.RootDocumentCode
shipment.created	Not Used
shipment.modified	Not Used
shipment.status	Not Used
shipment.tracking_number	SalesOrder.CarrierTrackingCode_IUK
shipment.carrier	SalesOrder.CarrierTrackingURL_IUK
messages.message	Not Used
messages.created	Not Used

Shiptheory Preferences:

Linked Carriers:

Carrier C...	Name	Desc
--------------	------	------

Shipping Methods:

Code	Description
------	-------------

Auto Run Interval:

Auto Run SO Status:

Address Format:

Tick 'OK To Ship' Before Sending

Show In Menu

FULLY INTEGRATED SHIPPING AT ITS SMARTEST!

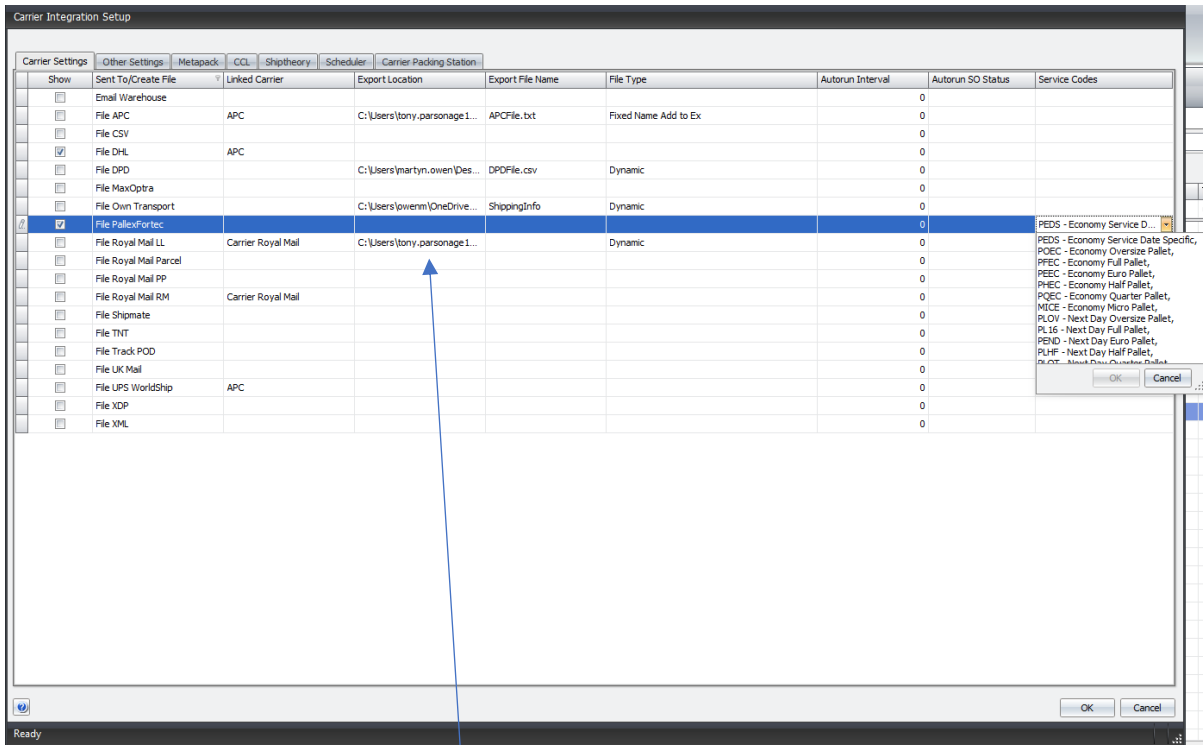
Ship smarter by letting Shiptheory automate your shipping and save you hours of work every day. Get started today, for FREE.

OK Cancel

You need to enter your Ship Theory details so we can send them order information and get back Shipping labels as part of the Packing Station process.



Carrier File Setup



If you need to create a file for a carrier or TrackPOD etc. then for each file type you can define the export location like C:\CarrierFiles\DPD etc. the file name and the file type. Some carriers or own delivery software can accept any files in a folder or have to be a specific name that just get orders added to them as lines in the 1 file.

There is also an option to specify Service codes for a file which would default in the first in the list. When in the packing interface if the shipping method has service codes then the column will appear.

